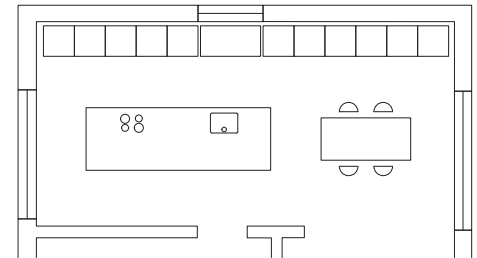


bulthaup



From  
**LOCAL FAVORITES**  
to  
**HIGH END**



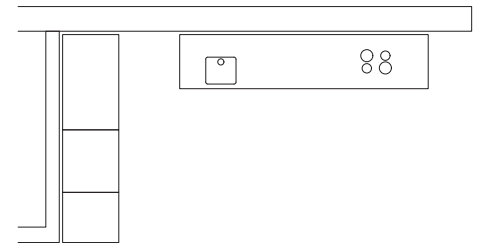
bulthaup b3 – Kortrijk, Belgium. The planning plays with the choice of materials and gives each area a background. Sitting in front of a functional equipment block in kaolin laminate, which forms a single unit with the wall, is an island in natural gray structured oak with a hob and sink, as well as a large worktop. A long storage space module also in natural gray structured oak provides the background for the kaolin-colored bulthaup c2 table – a place of interaction and communication. The handle-free fronts support the calm design.

bulthaup





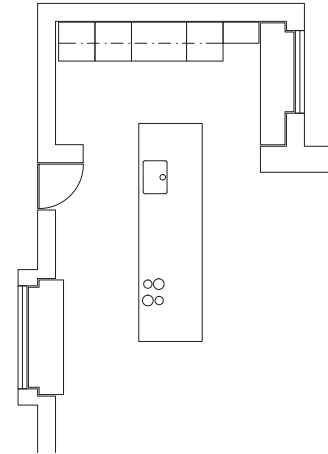
bulthaup b3 – Knokke, Belgium. A restrained functional line leaves plenty of space for personal touches and integrates the sink and hob. Flush-mounted into a white cube, a block containing equipment behind doors in black-brown oak creates a natural feel and matches the colors of the living space. Primarily handle-free fronts accentuate the concept's calm and cozy look. The result is a loft-based living space that harmoniously combines cooking, eating, and living.



bulthaup







bulthaup b3 – Ingooigem, Belgium. The kitchen island combines two spaces through a rounded arch. The tone of the furniture in flint and anthracite accentuates the uniform appearance. The varied depth units speak to the room's architecture. Above the long island with its work top, hob and sink, the iconic bulthaup extractor highlights the linear area of activity below. The primarily handle-free fronts contribute to the living space's cozy appearance.

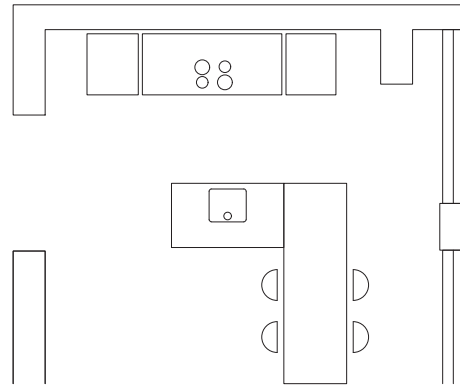
bulthaup







bulthaup b3 – London, United Kingdom. All of the functions combined into a small space: A b Solitaire glass connects the cooking and dining area to the adjacent living space. The wall line in matt anthracite lacquer acts like a frame: All of the surrounding elements are front-flush with the functional area, featuring a stainless-steel work top, hob and glass panel wall. A sectional shutter unit allows the small appliances to be temporarily hidden out of sight. A bar table connects to the island in structured, black-brown oak with sink, creating space for human interaction.

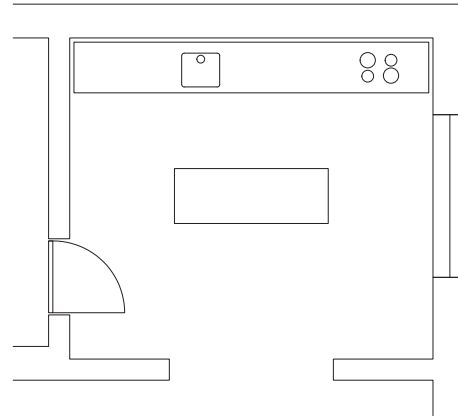


bulthaup





bulthaup b3 – Hamburg, Germany. The functional line extends from wall to wall like a playing field: Equipped with a hob, sink and stainless-steel worktop, it invites one to prepare, work, and cook. It is complemented by a floor-mounted island block, which creates space for human interaction and preparation. Handle-free fronts in black-gray oak contrast with the stainless steel, as well as with the old-style villa's stucco and herringbone parquet.



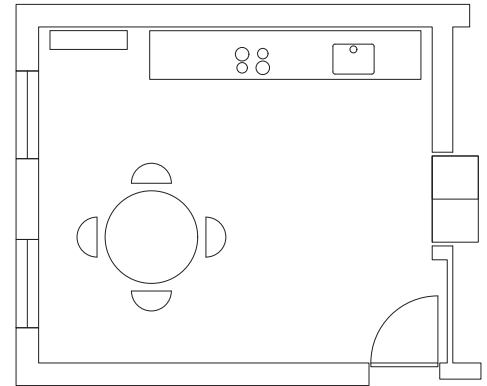
bulthaup





outthrup





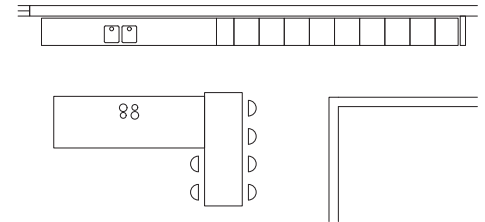
bulthaup b3 – Hamburg, Germany. As an extension to the living space, the wall-hanging functional line in anthracite linoleum, is positioned in front of a five-meter-long panel wall with horizontal walnut veneer. Personal objects are housed on the open shelves. White units integrated into the wall serve as functional supports and form a single unit with the architecture.

bulthaup





bulthaup b3 – Scottsdale, USA. Functional boxes with wall-mounted faucets create a clear work surface and, together with the aluminum cooking island, deliver professional fittings. At the same time, the concept matches the warm materials of the room and plays with light: Natural oak fronts, a solid walnut bar top and wall panels in glass that reflect the light. This combination makes a statement in this generous space yet, with the foot-supported island, appears lightweight, as though floating.

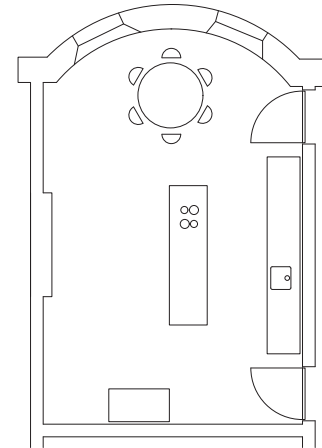


bulthaup





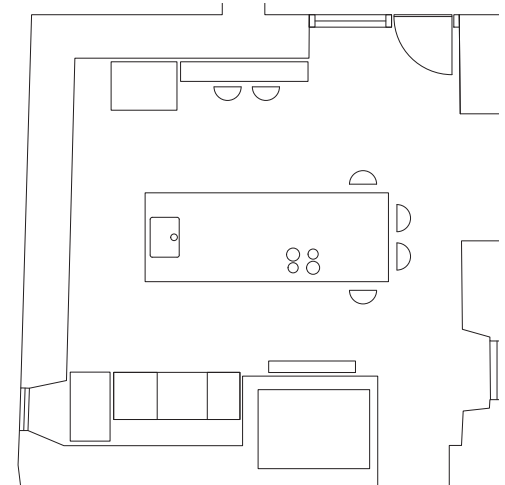




bulthaup b3 and b2 – Edinburgh, United Kingdom. The combination of b3 and b2 produces a creative space to stage modern art and Georgian architecture. The graphite-colored wall line, clean and handle-free, boasts a sink and plenty of functional space for preparation. Strikingly, the b2 workbench with hob is positioned in the center of the room. The b2 kitchen tool cabinet in walnut veneer allows the contents to be hidden or displayed, serving as an eye-catching storage space.

bulthaup





bulthaup b3 – Sant Pere de Torelló, Spain. The functional kitchen actively encourages you to use it: The central cooking island can be used from all sides. Units containing technology and storage space, functional boxes, a pocket door cabinet, and a multi-functional wall with stainless steel shelf, cook book holder and herb pots, support all the activities at the work unit. Handles ensure easy access. In terms of design, the b3 – with its systematic surface grid – appears to respond to the irregularities of the natural stone architecture.

bulthaup

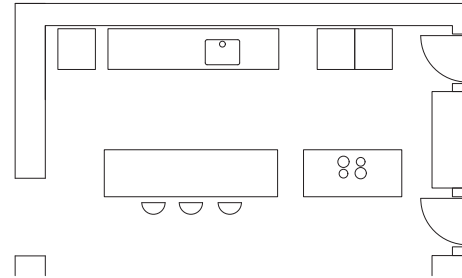








bulthaup b3 – Lisbon, Portugal. Separate functional areas relate to each other perfectly: The positioning of the faucet on the wall creates an uncluttered work surface. Opposite, a b2 workbench creates an additional area for preparation. A second workbench with hob complements the technology integrated into the mid-height unit. The striking b2 workbenches complement the muted b3 wall line to create a place of communication.



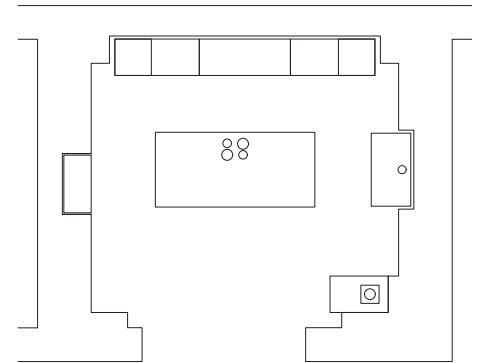
bulthaup







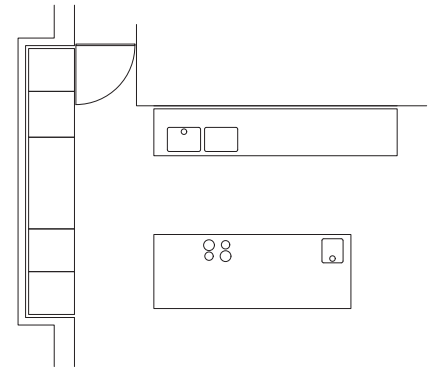
bulthaup b3 – Santa Flavia, Sicily. The stage for living is set by a harmonious choice of colors, painted wooden elements and rough stone floors. In this setting, the dark simple furniture takes a step back revealing the functionality of the space. Units integrated into the wall niche frame the centrally positioned work surface with its functional wall panel. The sink, comprising a bulthaup mixer faucet and wall panel, is combined with a stone basin from the region. The stainless-steel surfaces of the cooking island create an intense interplay of colors.



bulthaup





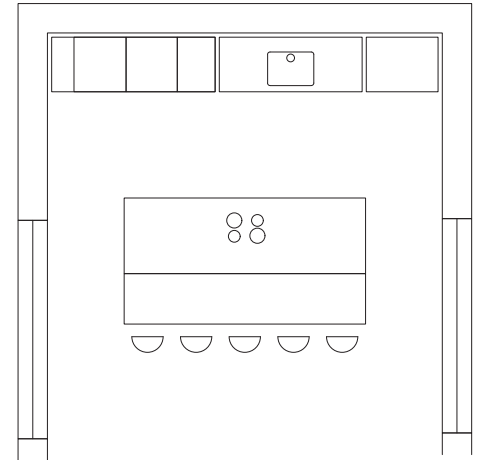


bulthaup b3 – Perelada, Spain. Two handle-free islands are dedicated to preparation and cooking. Units can temporarily show or hide the associated technologies using pocket doors. Creating a calm atmosphere, the tall units form a single unit with the wall when closed. The functional character of the Alpine white laminate contrasts with the interior fittings in walnut, placing the technology into a natural context. The concept highlights the transparency of the generous living space.

bulthaup



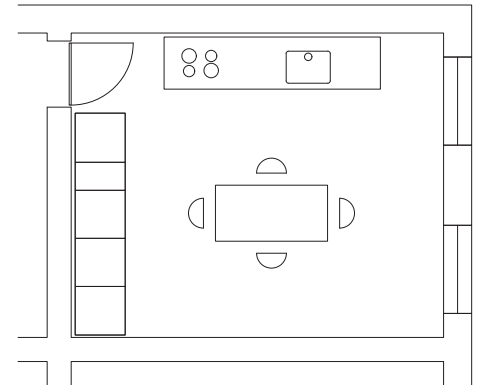




bulthaup b3 – Bangkok, Thailand. The functional line blends with the wall, creating a homogeneous impression in the room. At the worktop, a wall mounted faucet creates an unrestricted area for activity, supported by functional boxes as well as surrounding technology and storage space. Daylight enters the room from both sides, illuminating the solid walnut bar top which, combined with the cooking island, creates an area for communication. Additional light comes from the extractor above the hob.

bulthaup



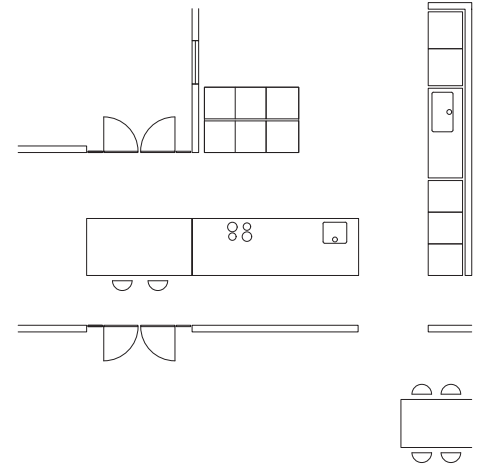


bulthaup b3 – Venice, Italy. Maximum function and a cozy atmosphere: The b3 multi-functional wall supports sink, functional boxes and storage space elements. The wall-hanging line with hob therefore becomes a highly functional area of activity. Its independence from the floor gives the room a spacious feel and, together with the warm walnut veneer and handle-free surfaces, creates an intimate atmosphere around the table. The technology is housed in white units, which form a single unit with the architecture.

bulthaup







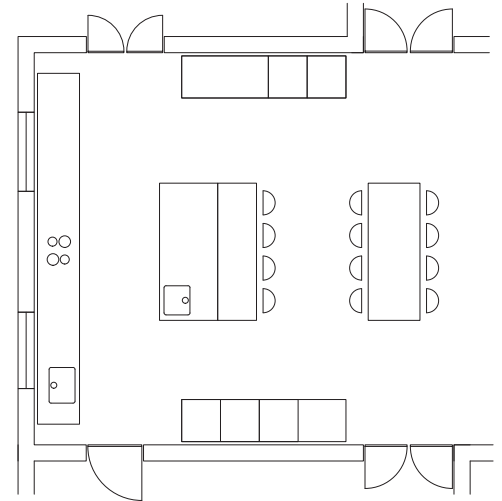
bulthaup b3 – Pinelands, South Africa. The heart of this house is a sculptural island. It combines three rooms to create a living space in which to cook, eat and live. A large drainage area around the water point is a feature of the work area at the wall. Technology is integrated into adjacent units which also connect with the cooking island. A white bar top extends the island to create a place of communication. Aluminum gray pocket doors hide or display contents – depending on whether they're needed or need to be out of sight.

bulthaup





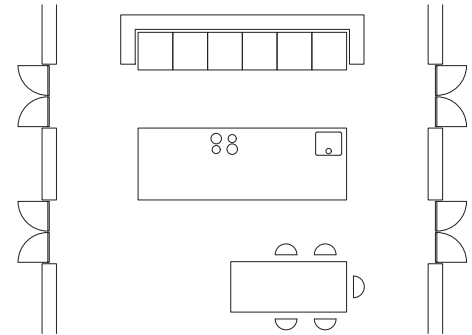




bulthaup b3 – Bischopscourt, South Africa. A playing field with a stainless-steel worktop, sink and hob extends from wall to wall. The surfaces in solid walnut create a warm, natural contrast. The wall-hanging working line gives the room even more value thanks to its freedom from the floor. The island opens up to the living space and, with its solid walnut bar top, creates a space for conversation and gathering. With the exception of the wine cabinet, the technology is hidden by pocket doors.

bulthaup





bulthaup b3 – Franschhoek, South Africa. The room is structured into three functional levels: The line integrated into the wall houses the storage space and technology, which can be hidden or displayed using pocket doors. The mono-block in front of it is equipped with a worktop, sink and hob, creating a field for many activities from preparation to cooking. The bulthaup c2 table provides the place for people to come together. The uniform choice of colors and materials creates a link between the levels and creates harmony within the room.

bulthaup



